

CLEARFIL™ Universal Bond Quick 2

**Fast, Strong, Seamless
The Bond Evolution**



Fast, Strong, Seamless The Bond Evolution

Features »

- ✓ No Waiting Time After Application
- ✓ Thin, Uniform, and Strong Bonding Layer
- ✓ Room Temperature Storage



Features and their Benefits



Reduced Technical Errors

No waiting time means less risk in control of treatment time and reduces risk of contamination. Additionally, smooth treatment can be performed in the lower teeth, where there is a lot of saliva, as well as in children and elderly patients who have difficulty keeping their mouths open for long periods.



Minimal Impact

A thin bonding layer reduces the influence on the cavity or abutment morphology during sealing. Despite its thin film thickness, our innovative Urethane Tetramethacrylate Monomer improves the mechanical strength of the bonding layer, resulting in a durable and long-lasting restoration.



Easy Application

Regardless of the application case, this bond can be applied smoothly and evenly without pooling of the liquid, even in the corners of cavities.



Always Within Reach

Being able to store this bond at room temperature (2-25°C/36-77°F) allows for efficient preparation and cleanup before and after the treatments.



ADVANCED RAPID BOND TECHNOLOGY

No waiting time after application, high adhesion technology

High Bond Strength



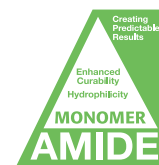
Synthesized and refined independently by Kuraray Noritake Dental.

Strong Bond Layer



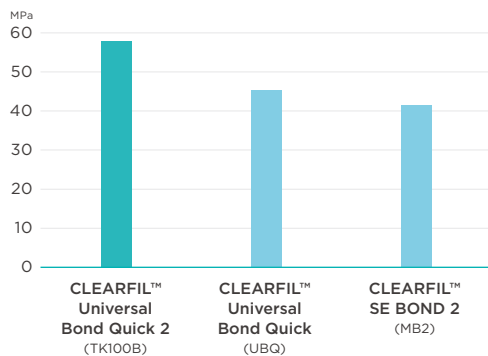
The original multifunctional monomer provides an increase in the strength of the bond layer.

No Waiting Time



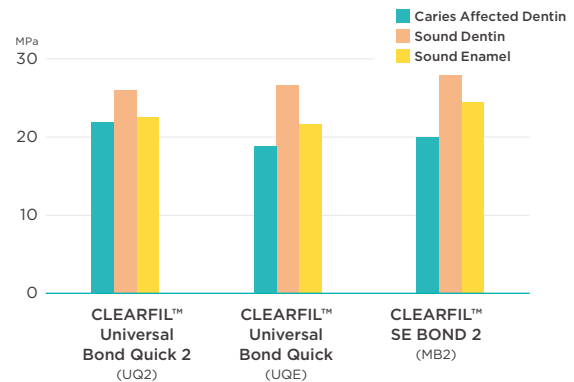
Highly hydrophilic and becomes hydrophobic and water-resistant after polymerization.

Strength of bonding layer: Ultimate tensile strength



*The text in parentheses is the name referred to in the original study.
K. Hosaka et. al., (Tokushima Univ.)
The 159th Meeting of the Japanese Society of Conservative Dentistry Program A7

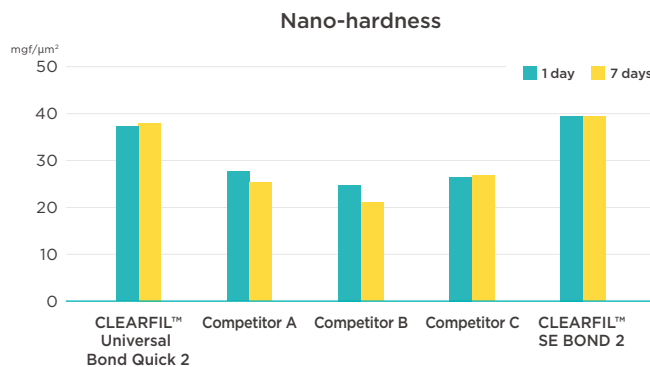
Immediate Tensile Bond Strength to Three Type of Cervical Substance



*The text in parentheses is the name referred to in the original study.
T. Ito, et. al., (Nippon Dental University)
The 161st Meeting of the Japanese Society of Conservative Dentistry Program P13

Protection of Dentin by Strong Bond Layer

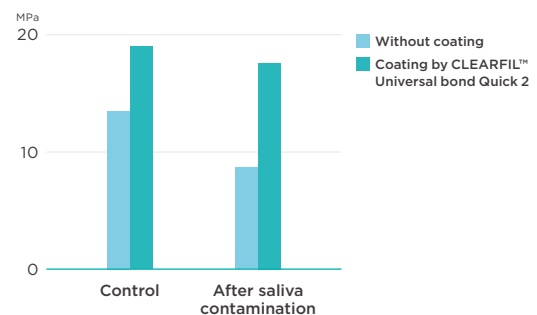
CLEARFIL™ Universal Bond Quick 2 exhibits higher nano-hardness compared to competitor's products.



Source: Kuraray Noritake Dental
Test condition: •Hap: #1000
•Test load: 100 mg, Distance between measurement: 10μm
After application of bonding material, air blow, light irradiation and remove the unpolymerised layer with an alcohol cotton ball. Then store the specimens in water at 37°C before measurement.

The coating can reduce the effect of contamination on an adherent surface.

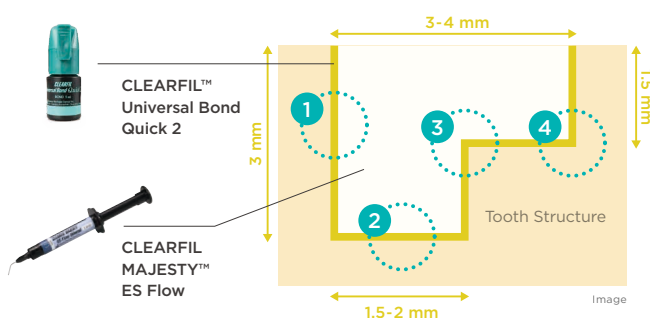
Shear Bond Strength Using PANAVIA™ SA Cement Universal: Comparison with and without Coating



Source: Kuraray Noritake Dental
Test condition: •Human dentin: #1000
Coat with CLEARFIL™ Universal Bond Quick 2, contaminate with artificial saliva for 1 minute, remove contamination with water, cement SUS tip (3mmφ) with PANAVIA™ SA Cement Universal, and then store in water at 37°C for 24 hours.

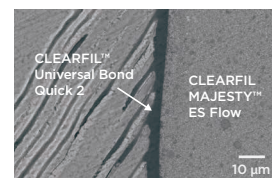
Formation of Thin and Uniform Bonding Layers

Forms a thin, uniform layer regardless of the application case due to the appropriate viscosity. Resistant to fluid accumulation, even in the corners of cavities.

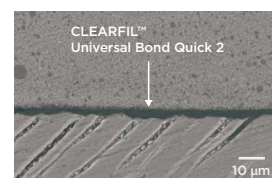


Formation of staircase-shaped fossae, filled of CLEARFIL MAJESTY™ ES Flow/CLEARFIL™ Universal Bond Quick 2

1 Side



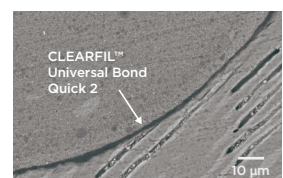
2 Floor



3 Edge



4 Corner



Source: Kuraray Noritake Dental

Expanding and Enhancing Universal Use

- ✓ Direct restorations using light-cured composite resin
- ✓ Post cementation and core build-ups
- ✓ Cementation of all indirect restoration

Can be used with other manufacturers' self-adhesive cement.*

Please refer to the relevant Instructions for Use for the materials.

*When using with self-adhesive resin cement without any specific instructions to pretreatment the adherent surface, use with DC Activator for the pretreatment of the prosthetic.

All Etching Techniques



Self-etch
(no phosphoric acid)



Selective-etch
(phosphoric acid on enamel)



Total-etch
(phosphoric acid on enamel and dentin)

Direct Restorations Using Light-Cured Composite Resin

1 Tooth pretreatment
Choose either etching procedure

a. Self-etching (Move to section 2)

b. Selective-etching
Apply K-ETCHANT Syringe to the uncut and /or cut enamel, then rinse and dry

b. Total-etching
Apply K-ETCHANT Syringe to the entire cavity (enamel and dentin), then rinse and dry

2 Apply BOND with a rubbing motion

3 Dry by blowing mild air until BOND does not move^{*1}

4 Light-cure^{*2}

5 Place composite resin, light-cure and finish

^{*1} Use a vacuum aspirator to prevent BOND from scattering.
^{*2} Dental curing unit and curing time

Type	Light source	Light intensity	Light-curing time
Halogen	Halogen lamp	More than 400 mW/cm ²	10 seconds
LED	Blue LED [*]	800-1400 mW/cm ²	10 seconds
		More than 1500 mW/cm ²	5 seconds

The effective wavelength range of each dental curing unit must be 400-515 nm.
^{*}Peak of emission spectrum: 450-480 nm

Overview of Features



^{*1} The time after dispensing which does not practically affect to its bond strength after exposing 8000lx of light for 30 sec.

^{*2} Use the light-blocking plate to avoid exposing the material to an operating light or ambient light.

^{*3} Open, dispense, and close with one hand. Unique nozzle design allows precise dosage of the bonding, reducing the risk of waste and spillage.

Ordering Information

#4042-WD Bottle Refill

Bond (5.0 ml) x1

#4044-WD Bottle Value Pack

Bond (5.0 ml) x3

#4046-WD Unit Dose Standard Pack

Unit Dose x50, Applicator brushes (fine) x50



Kuraray Noritake Dental Inc.

1621 Sakazu, Kurashiki, Okayama 710-0801, Japan

Website www.kuraraynoritake.com

- Before using this product, be sure to read the Instructions for Use supplied with the product.
- The specifications and appearance of the product are subject to change without notice.
- Printed colour can be slightly different from actual colour.

"CLEARFIL", "CLEARFIL MAJESTY" and "PANAVIA" are registered trademarks or trademarks of KURARAY CO., LTD.